



ScanFront 300 / 300P SDK Information Brief

February 2011



What is the ScanFront 300 / 300P SDK?

- Canon provides two ScanFront 300 / 300P SDK's:
 - UI (User Interface) Customization Tool
 - Add-In (DLL) SDK

ScanFront 300 / 300P UI (User Interface) Customization Tool:

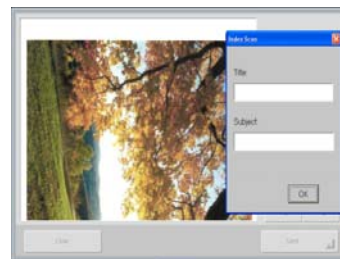
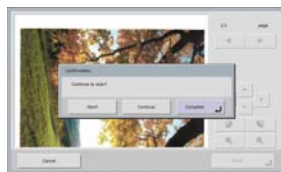
- What is it?: A set of configuration tools to upload images and settings to ScanFront 300 / 300P
- Usage : To change the appearance of the ScanFront 300 / 300P screens
- Skill Level : Basic Microsoft Windows knowledge
- Advantages : Quickly change buttons/backgrounds/logos for Customers
- Description:
 - All the individual buttons and screen backgrounds are created from individual image files.
 - To add an icon to a button, or a company logo, first create the necessary images using any graphics package, and then bundle the images together using the UI Customization Tool.
 - Finally add the image bundle to the ScanFront 300 / 300P using the Administrator's web page.
 - A simple customization may be achieved in minutes.



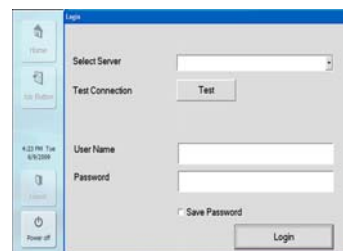
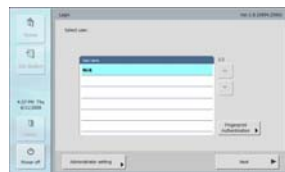
ScanFront 300 / 300P Add-In SDK:

- What is it?: An SDK platform builder tool for Microsoft Visual Studio to create ScanFront 300 / 300P runtime dynamic link libraries (.dll's)
- Usage : To customize the existing ScanFront 300 / 300P screens and workflow
- Skill Level : Must be Software Developer with Microsoft Visual Studio experience
- Advantages : Customize the scanning workflow to meet requirements
- Description:
 - The SDK cannot be used to create a completely new application
 - The ScanFront 300 / 300P has its own scanning application and the SDK can be used to add new functionality to this application, e.g.
 - Modify the workflow
 - Assist the User
 - Integrate the ScanFront 300 / 300P with backend systems

Add-In (DLL) SDK Examples:



Add index data to a scan before sending



. Customized login screen

2

Development Environment:

- ScanFront 300 / 300P OS is Windows CE 6.0
- Development language: C++, C
- Create DLL using add in SDK and developer tools
- Visual Studio 2005 Standard Edition and above is recommended
 - always use SP1
- Development PC:
 - Windows 2000 SP4
 - Windows XP SP3
 - Windows Vista (edition higher than Business)
- Visual Studio 2008 and/or higher development environment is NOT supported
 - Operation of all sample programs, etc. is only confirmed on Windows XP SP3 & Visual Studio 2005 SP1
- An OS Image for de-bugging is provided

Cost:

- No charge for UI Tool or Add-in SDK

Contract:

- During installation, please carefully read the CEI Software License Agreement, click the “I accept the terms of the license agreement” radio button, & click “Next” to install the ScanFront 300 / 300P SDK



ScanFront 300 / 300P SDK Maintenance & Support:

- Optional Annual Contract – \$700
- SDK Technical support is requested & supplied via
 - <http://www.developersupport.canon.com>
- Support is provided through e-mail communication
 - If necessary, will be escalated to conference call (evaluated on individual basis)

Steps before the Developer can Release to the Market:

- The developer must provide CEI with the following before they are allowed to release to the market:
 - UI Customization Tool
 - UI Customization Tool Check List
 - Add-In SDK
 - QA Report
 - Add-in SDK Check List (if applicable)
 - Integrator application DLL (if applicable)
- Developer is now allowed to sell directly to the market or via other resellers

How to get the ScanFront 300 / 300P UI Customization Tool and/or ScanFront 300 / 300P Add-In SDK:

- PLEASE CONTACT YOUR LOCAL ACCOUNT EXECUTIVE
- REGISTER AND REQUEST SDK at:
 - <http://www.developersupport.canon.com>